

TM 11-6125-252-24P

TECHNICAL MANUAL

ORGANIZATIONAL, DIRECT SUPPORT, AND GENERAL SUPPORT MAINTENANCE
REPAIR PARTS AND SPECIAL TOOLS LISTS
(INCLUDING DEPOT MAINTENANCE REPAIR PARTS AND SPECIAL TOOLS)
FOR

**MOTOR GENERATOR PU-724/G
(NSN 6125-00-617-1435)**

HEADQUARTERS, DEPARTMENT OF THE ARMY
MAY 1978

TECHNICAL MANUAL }
 No. 11-6125-252-24P }

HEADQUARTERS
 DEPARTMENT OF THE ARMY
 WASHINGTON, DC, 17 May 1978

**ORGANIZATIONAL, DIRECT SUPPORT, AND GENERAL SUPPORT MAINTENANCE
 REPAIR PARTS AND SPECIAL TOOLS LISTS
 (INCLUDING DEPOT MAINTENANCE REPAIR PARTS AND SPECIAL TOOLS)
 FOR
 MOTOR GENERATOR PU-724/G
 (NSN 6125-00-617-1435)**

Current as of 17 November 1977

REPORTING OF ERRORS

You can improve this manual by recommending improvements using DA Form 2028-2 (Test) located in the back of the manual. Simply tear out the self-addressed form, fill it out as shown on the sample, fold it where shown, and drop it in the mail.

If there are no blank DA Form 2028-2 (Test) in the back of your manual, use the standard DA Form 2028 (Recommended Changes to Publications and Blank Forms) and forward to the Commander, US Army Communications Electronics Materiel Readiness Command, ATTN: DRSEL-MA-Q, Fort Monmouth, NJ 07703.

In either case a reply will be furnished direct to you.

Table of Contents

		Page	Illus Figure
SECTION	I. Introduction _____	1	
	II. Repair parts list -----	5	
GROUP	00 Motor Generator PU-724/G (Northfield Electric) _____	5	1-3
	00 Motor Generator PU-724/G (Dyna Technology) _____	17	4.5
SECTION	III. Special tools list (Not applicable)		
	IV. National stock number and part number index -----	24	

* This manual supersedes so much of TM 11-4125-252-15, 7 July 1971, as pertains to repair parts and special tools list.

SECTION I INTRODUCTION

1. Scope

This manual lists spares and repair parts; special tools; special test, measurement, and diagnostic equipment (TMDE), and other special support equipment required for performance of organizational, direct support, and general support maintenance of the PU-724/G. It authorizes the requisitioning and issue of spares and repair parts as indicated by the source and maintenance codes.

2. General

This Repair Parts and Special Tools List is divided into the following sections:

a. Section II. Repair Parts List. A list of spares and repair parts authorized for use in the performance of maintenance. The list also includes parts which must be removed for replacement of the authorized parts. Parts lists are composed of functional groups in numeric sequence, with the parts in each group listed in figure and item number sequence.

b. Section III. Special Tools List. Not applicable.

c. Section IV. National Stock Number and Part Number Index. A list, in National item identification number (NIIN) sequence, of all National stock numbers (NSN) appearing in the listings, followed by a list, in alphameric sequence, of all part numbers appearing in the listings. National stock numbers and part numbers are cross-referenced to each illustration figure and item number appearance.

3. Explanation of Columns

a. Illustration. This column is divided as follows:

(1) *Figure number.* Indicates the figure number of the illustration on which the item is shown.

(2) *Item number.* The number used to identify item called out in the illustration.

b. Source, Maintenance, and Recoverability (SMR) Codes.

(1) *Source code.* Source codes indicate the manner of acquiring support items for maintenance, repair, or overhaul of end items. Source codes are entered in the first and second positions of the Uniform SMR Code format as follows:

<i>Code</i>	<i>Definition</i>
PA—	Item procured and stocked for anticipated or known usage.
AF—	Item to be assembled at direct support maintenance level.
XD—	A support item that is not stocked. When required, item will be procured through normal supply channels.

NOTE

Cannibalization or salvage may be used as a source of supply for any items source coded above except those coded XA and aircraft support items as restricted by AR 700-42.

(2) *Maintenance code.* Maintenance codes are assigned to indicate the levels of maintenance authorized to USE and REPAIR support items. The maintenance codes are entered in the third and fourth positions of the Uniform SMR Code format as follows:

(a) The maintenance code entered in the third position will indicate the lowest maintenance level authorized to remove, replace, and use the support item. The maintenance code entered in the third position will indicate one of the following levels of maintenance:

<i>Code</i>	<i>Application/Explanation</i>
O—	Support item is removed, replaced, used at the organizational level.
F—	Support item is removed, replaced, used at the direct support level.

(b) The maintenance code entered in the fourth position indicates whether the item is to be repaired and identifies the lowest maintenance level with the capability to perform complete repair (i.e., all authorized maintenance functions). This position will contain one of the following maintenance codes:

<i>Code</i>	<i>Application/Explanation</i>
F	The lowest maintenance level capable of complete repair of the support item is the direct support level.
Z	Nonreparable. No repair is authorized.

(3) *Recoverability code.* Recoverability codes are assigned to support items to indicate the disposition action on unserviceable items. The recoverability code is entered in the fifth position of the Uniform SMR Code format as follows:

<i>Recoverability codes</i>	<i>Definition</i>
Z	Nonreparable item. When unserviceable, condemn and dispose at the level indicated in position 3.
F	Reparable item. When uneconomically reparable, condemn and dispose at the direct support level.

c. National Stock Number. Indicates the National stock number assigned to the item and will be used for requisitioning purposes.

d. Part Number. Indicates the primary number used by the manufacturer (individual, company, firm, corporation, or Government activity), which controls the design and characteristics of the item by means of its engineering drawings, specifications, standards, and inspection requirements to identify an item or range of items.

NOTE

When a stock numbered item is requisitioned, the repair part received may have a different part number than the part being replaced.

e. Federal Supply Code for Manufacturer (FSCM). The FSCM is a 5-digit numeric code listed in SB 70842 which is used to identify the manufacturer, distributor, or Government agency, etc.

f. Description. Indicates the Federal item name and, if required, a minimum description to identify the item.

g. Unit of Measure (U/M). Indicates the standard of the basic quantity of the listed item as used in performing the actual maintenance function. This measure is expressed by a two-character alphabetical abbreviation (e.g., ea, in, pr, etc). When the unit of measure differs from the unit of issue, the lowest unit of issue that will satisfy the required units of measure will be requisitioned.

h. Quantity Incorporated in Unit. Indicates the quantity of the item used in the breakout shown on the illustration figure, which is prepared for a functional group, subfunctional group, or an assembly.

4. Special Information

a. Detailed assembly instructions for items source coded to be assembled are found in TM 11-6125-252-15. Assembly components are listed immediately following the item to be assembled.

b. The following publication pertains to the PU-724/G and its components:
TM 11-6125-252-15, Motor-Generator PU-724/G

5. How to locate Repair Parts

a. When National stock number or part number is unknown.

(1) *First.* Using the table of contents, determine the functional group within which the item belongs. This is necessary since illustrations are prepared for functional groups and listings are divided into the same groups.

(2) *Second.* Find the illustration covering the functional group to which the item belongs.

(3) *Third.* Identify the item on the illustration and note the illustration figure and item number of the item.

(4) *Fourth.* Using the Repair Parts Listing, find the figure and item number noted on the illustration.

b. When National stock number or part number is known.

(1) *First.* Using the Index of National Stock Numbers and Part Numbers, find the pertinent National stock number or part number. This index is in NIIN sequence followed by a list of part numbers in alphameric sequence, cross-referenced to the illustration figure number and item number.

(2) *Second.* After finding the figure and item

number, locate the figure and item number in the repair parts list.

6. Abbreviations

Not applicable.

(Next printed page is 4.)

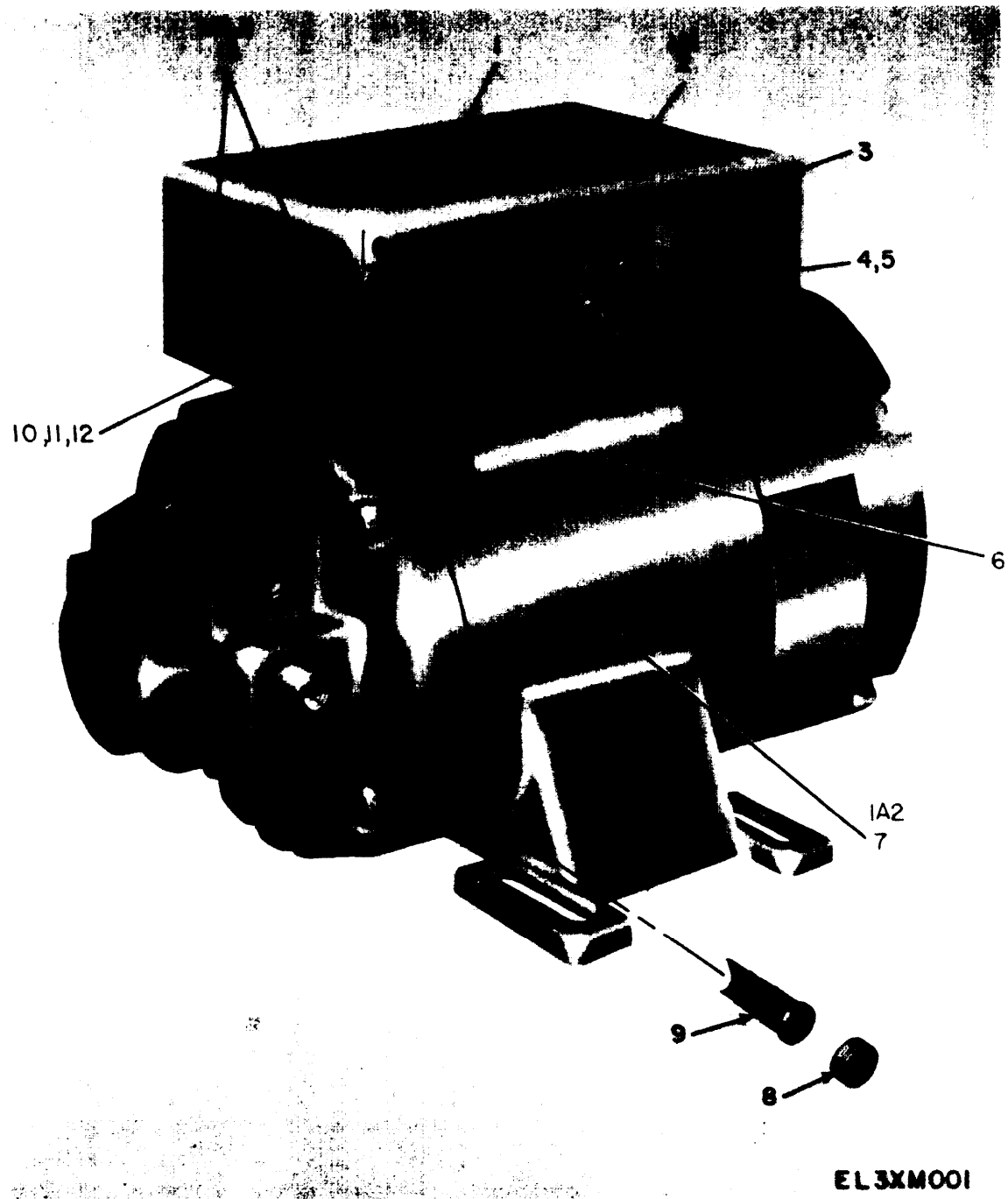
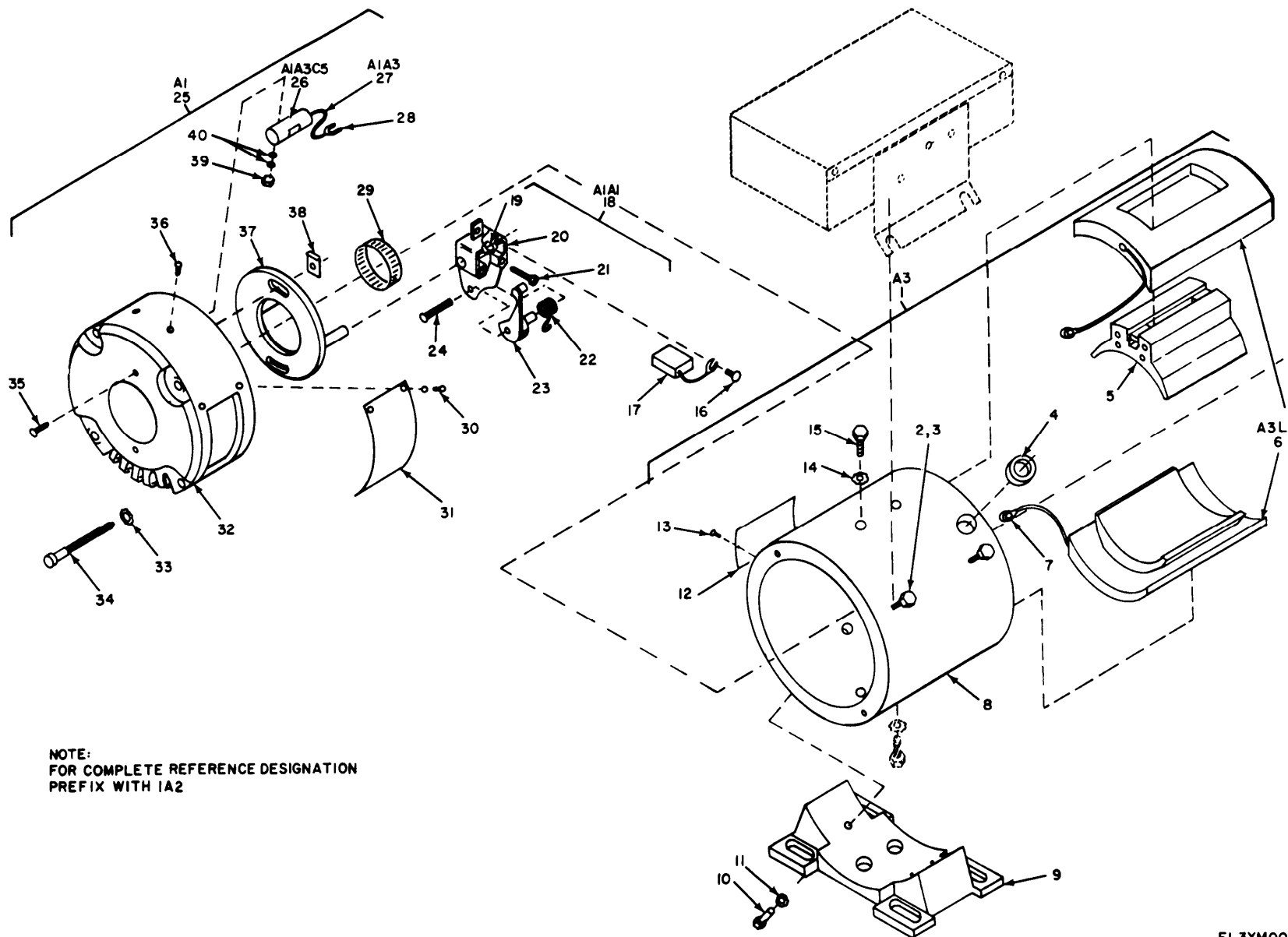


Figure 1. Motor Generator PU-724/G (Northfield Electric).

SECTION II				TM11-6125-252-24P					
(1)	(2)	(3)	(4)	(5)	(6)	(7)	(8)		
ILLUSTRATION									
(a)	(b)	NATIONAL		DESCRIPTION				QTY	
FIG	ITEM	SMR	STOCK	PART	FSCM	USABLE ON CODE	U\M	INC	
NO.	NO.	CODE	NUMBER	NUMBER				IN	
UNIT									
GROUP 00 MOTOR GENERATOR PU-724/G									
(NORTHFIELD ELECTRIC)									
1	1	XDFZZ		2838	13685		EA	1	
1	2	AFFFF		52825	813668		EA	1	
1	3	XDFZZ		2095-8-4RE	13685		EA	4	
1	4	XDFZZ		AN515-8-6	88044		EA	4	
1	5	PAFZZ	5310-00-559-0070	MS35333-38	96906		EA	4	
1	6	XDFZZ		2835	13685		EA	1	
1	7	AFFFF		2701	13685		EA	1	
1	8	PAOZZ	5999-01-023-8498	BE52	26992		EA	2	
1	9	PAOZZ	5977-00-629-7659	2717	13685		EA	2	
1	10	PAFZZ	5305-00-984-4988	MS35206-2288	96906		EA	2	
1	11	PAFZZ	5310-00-579-0079	MS35333-37	96906		EA	6	
1	12	PAFZZ	5310-00-176-8133	AN340-6	88044		EA	2	
1	13	PAFZZ	5935-00-448-1085	5252	74545		EA	1	

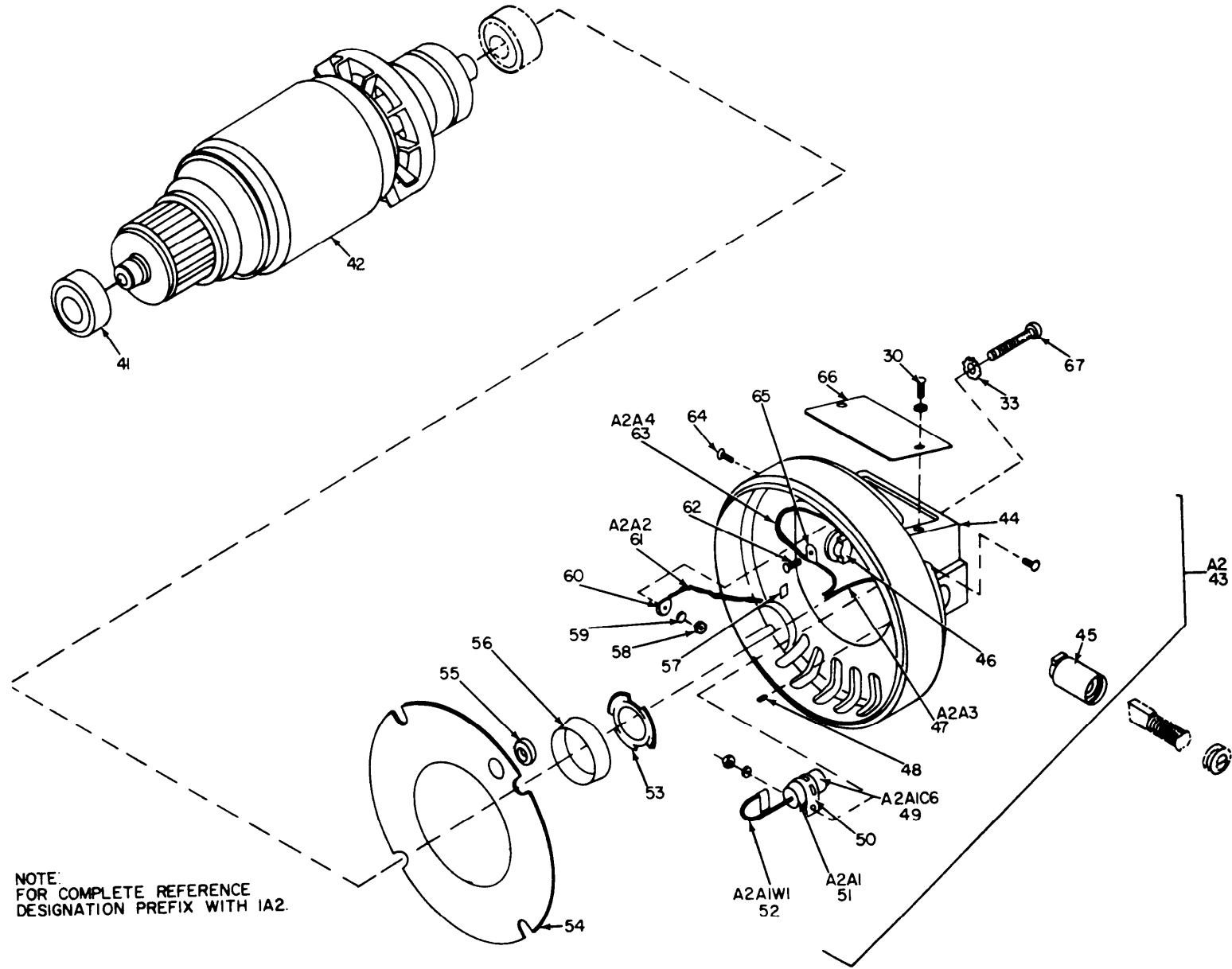


NOTE:
 FOR COMPLETE REFERENCE DESIGNATION
 PREFIX WITH IA2

Figure 2. Motor Generator PU-724/G (Northfield Electric), Exploded View (Sheet 1 of 2).

EL3XM002

TM11-6125-252-24P



NOTE:
FOR COMPLETE REFERENCE
DESIGNATION PREFIX WITH 1A2.

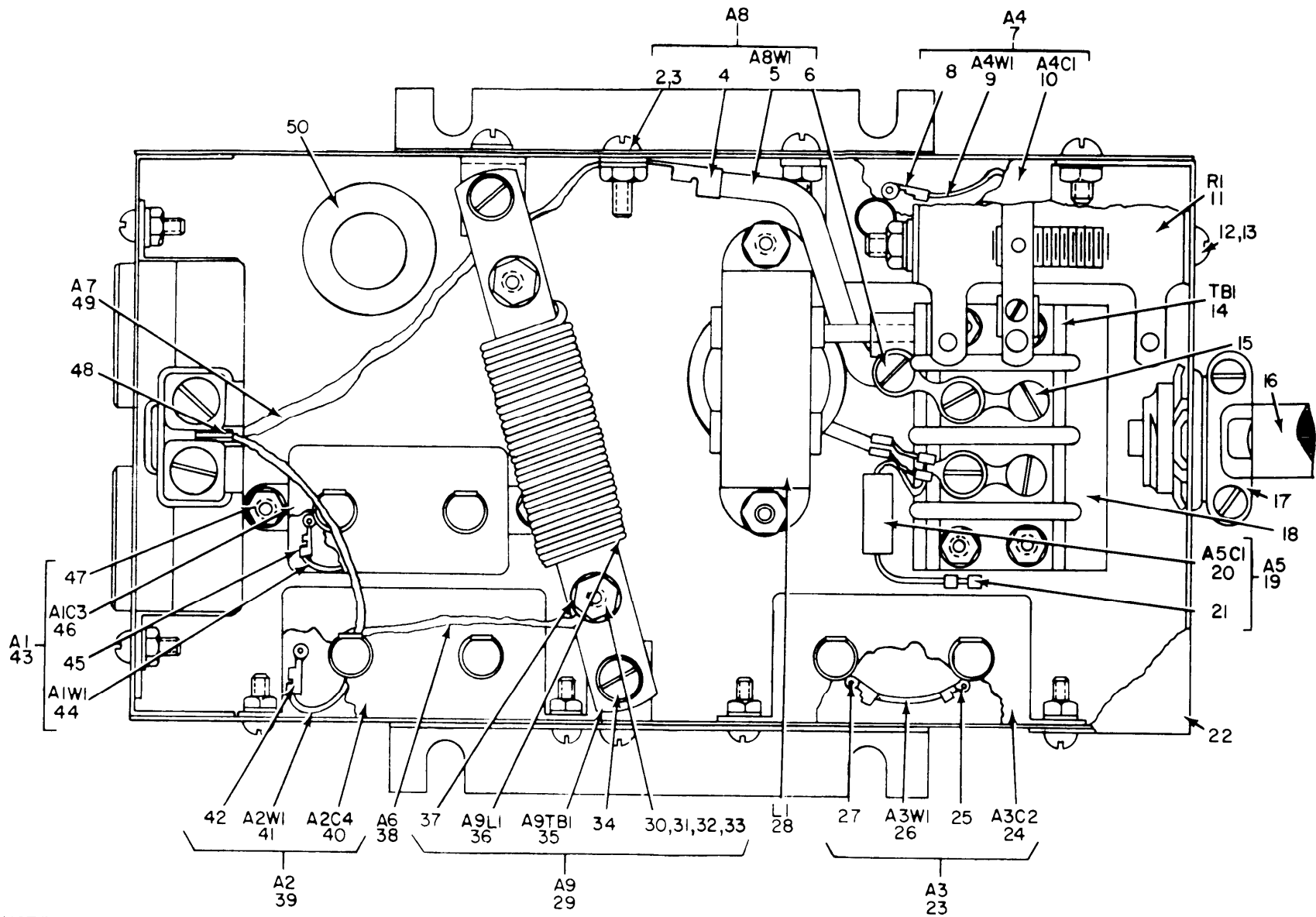
RIGHT SIDE

EL3XM003

Figure 2. Motor Generator PU-724/G (Northfield Electric), Exploded View (Sheet 2 of 2).

SECTION II				TM11-6125-252-24P					
(1)	(2)	(3)	(4)	(5)	(6)	(7)	(8)		
ILLUSTRATION					DESCRIPTION		QTY		
(a)	(b)	NATIONAL	PART	FSCM		U\M	INC		
FIG	ITEM	STOCK	NUMBER				IN		
NO.	NO.	NUMBER					UNIT		
2	1	XDFFF	2713	13685	FIELD ASSEMBLY	EA	1		
2	2	XDFZZ	2087-420-8	13685	SCREW, MACHINE	EA	4		
2	3	PAFZZ 5310-00-209-0786	AN936B416	88044	WASHER, LOCK	EA	4		
2	4	PAFZZ 5325-01-004-0295	1961-3	13685	GROMMET, RUBBER	EA	2		
2	5	AFFFF	2714	13685	POLE SHOE ASSEMBLY	EA	2		
2	6	XDFFF	2715	13685	COIL ASSEMBLY, FIELD	EA	1		
2	7	PAFZZ 5940-00-187-5075	2045	77147	TERMINAL, LUG	EA	4		
2	8	XDFZZ	270654-55	13685	SHELL	EA	1		
2	9	XDFZZ	2707	13685	BASE, MOUNTING	EA	1		
2	10	XDFZZ	1705-516-12	13685	SCREW, MACHINE	EA	3		
2	11	PAFZZ 5310-00-167-0721	AN936A516	88044	WASHER, LOCK	EA	3		
2	12	XDFZZ	3761	13685	PLATE, IDENTIFICATION	EA	1		
2	13	PAFZZ 5305-00-175-3230	AN535-2-3	88044	SCREW, DRIVE	EA	2		
2	14	PAFZZ 5310-00-209-0786	AN936B416	88044	WASHER, LOCK	EA	4		
2	15	PAFZZ 5306-01-004-0296	2087-428-14	13685	BOLT, MACHINE	EA	4		
2	16	PAOZZ 5305-01-009-6673	2095-1024-6RE	13685	SCREW, ASSEMBLED WASHER	EA	2		
2	17	PAOZZ 5977-00-629-7622	1218	13685	BRUSH ASSEMBLY, DC	EA	2		
2	18	XDFZZ	1282	13685	BRUSH HLDR ASSY, DC	EA	2		
2	19	XDFZZ	AN560A10-10	88044	SETSCREW	EA	4		
2	20	XDFZZ	1225	13685	BRUSH HOLDER	EA	2		
2	21	XDFZZ	AN560A10-10	88044	SETSCREW	EA	4		
2	22	PAFZZ 5360-01-010-2676	1247	13685	SPRING, HELICAL, COMPRESSION	EA	2		
2	23	XDFZZ	1246	13685	ARM	EA	2		
2	24	PAFZZ 5320-01-004-0307	2097-7	13685	RIVET, TUBULAR	EA	4		
2	25	XDFZZ	2711	13685	END BRACKET ASSY, FR	EA	1		
2	26	XDFZZ	CP12A3KF104K1	81349	CAPACITOR, FXD, PAPER	EA	1		
2	27	XDFZZ	1261	13685	CAPACITOR LEAD ASSY	EA	2		
2	28	PAFZZ 5940-00-629-6762	2055	77147	TERMINAL, LUG	EA	2		
2	29	PAFZZ 5365-01-004-0612	AN40X12S	51588	BEARING RING	EA	2		
2	30	XDFZZ	2095-6-4RE	13685	SCREW, ASSEMBLED WSH	EA	10		
2	31	XDFZZ	2719	13685	MOTOR GENERATOR ASSY	EA	1		
2	32	XDFZZ	2702	13685	END BRACKET, FRONT	EA	1		
2	33	PAFZZ 5310-00-209-0786	AN936B416	88044	WASHER, LOCK	EA	8		
2	34	XDFZZ	AN500-416-44	88044	SCREW, MACHINE	EA	4		
2	35	PAFZZ 5305-01-009-7149	2095-1032-12RE	13685	SCREW, ASSEMBLED WSH	EA	2		
2	36	PAFZZ 5305-00-889-3000	MS35206-230	96906	SCREW, MACHINE	EA	2		
2	37	XDFZZ	1212	13685	YOKE ASSEMBLY	EA	1		
2	38	XDFZZ	1253	13685	PLATE-CLAMPING	EA	2		
2	39	PAFZZ 5310-00-176-8133	AN340-6	88044	NUT, PLAIN, HEXAGON	EA	2		
2	40	PAFZZ 5310-00-209-0788	AN936B6	88044	WASHER, LOCK	EA	4		

SECTION II				TM11-6125-252-24P					
(1)	(2)	(3)	(4)	(5)	(6)	(7)	(8)		
ILLUSTRATION									
(a)	(b)	NATIONAL		DESCRIPTION					
FIG	ITEM	SMR	STOCK	PART		USABLE ON CODE	U\M	QTY	INC
NO.	NO.	CODE	NUMBER	NUMBER	FSCM			IN	UNIT
2	41	PAFZZ	3110-00-114-6005	Z97503	43334	BEARING,BALL,ANLR	EA	2	
2	42	XDFZZ	5925-01-004-3055	2704	13685	ARMATURE	EA	1	
2	43	XDFZZ		2712	13685	END BRACKET ASSY	EA	1	
2	44	XDFZZ		2703	13685	END BRACKET, FAN END	EA	1	
2	45	XDFZZ		8010CG1250	46992	BRUSH HOLDER	EA	2	
2	46	PAFZZ	5999-01-004-9905	26-C	46992	CLIP	EA	1	
2	47	XDFZZ		3485	13685	LEAD AND TERM ASSY	EA	1	
2	48	PAFZZ	5305-00-719-5342	MS51963-34	96906	SETSCREW	EA	2	
2	49	XDFZZ		CP12A3KF104K1	81349	CAPACITOR,FXD,PAPER	EA	1	
2	50	PAFZZ	5999-01-004-9905	26-C	46992	CLIP	EA	2	
2	51	XDFZZ		1291	13685	CAPACITOR LEAD ASSY	EA	1	
2	52	XDFZZ		X1000-81	13685	WIRE, ELECTRICAL,18 GA,WHT,STRD	EA	2	
2	53	PAFZZ	5310-00-141-9705	S17	43334	WASHER,SPRING TENSION	EA	1	
2	54	XDFZZ		2710	13685	PLATE, BAFFLE	EA	1	
2	55	PAFZZ	5325-00-290-4344	1787	70485	GROMMET,RUBBER	EA	1	
2	56	PAFZZ	5365-01-004-0612	AN40X12S	51588	BEARING RING	EA	1	
2	57	XDFZZ	5999-01-004-9905	26-C	26992	CLIP	EA	1	
2	58	PAFZZ	5310-00-176-8133	AN340-6	88044	NUT,PLAIN,HEXAGON	EA	2	
2	59	PAFZZ	5310-00-209-0788	AN936B6	88044	WASHER,LOCK	EA	4	
2	60	XDFZZ		3027	77147	TERMINAL,LUG	EA	1	
2	61	XDFZZ		1905	13685	LEAD AND TERM ASSY	EA	1	
2	62	XDFZZ		2095-8-4RE	13685	SCREW,ASSEMBLED WSH	EA	1	
2	63	XDFZZ		3486	13685	LEAD AND TERM ASSY	EA	1	
2	64	PAFZZ	5305-00-889-3000	MS35206-230	96906	SCREW,MACHINE	EA	2	
2	65	XDFZZ		3020	77147	TERMINAL,LUG	EA	1	
2	66	XDFZZ		2720	13685	COVER,AC END	EA	1	
2	67	XDFZZ		AN500-416-26	88044	SCREW,MACHINE	EA	4	



EL3XM004

Figure 3. Motor Generator PU-724/G (Northfield Electric), Filter Box Assembly, Parts Location.

SECTION II				TM11-6125-252-24P					
(1)	(2)	(3)	(4)	(5)	(6)	(7)	(8)		
ILLUSTRATION				DESCRIPTION					
(a)	(b)	NATIONAL	PART						
FIG	ITEM	STOCK	NUMBER	FSCM					QTY
NO.	NO.	NUMBER			USABLE ON CODE	U\M			INC
								IN	
								UNIT	
3	1	PAFFF	6150-01-029-5029	3488-1	13685	LEAD AND TERM ASSY	EA		1
3	2	PAFZZ	5305-00-990-6444	MS35207-261	96906	SCREW, MACHINE	EA		1
3	3	PAFZZ	5310-00-576-5752	MS35333-39	96906	WASHER, LOCK	EA		1
3	4	PAFZZ	5940-00-187-5075	2045	77147	TERMINAL, LUG	EA		2
3	5	XDFZZ		X1000-97	13685	WIRE, ELECTRICAL, 10 GA, BLK, STRD	EA		1
3	6	PAFZZ	5305-00-984-6193	AN515-8-8	88044	SCREW, MACHINE	EA		1
3	7	XDFFF		2830	13685	CAPACITOR ASSY, DC	EA		1
3	8	XDFZZ		3027	77147	TERMINAL, LUG	EA		2
3	9	XDFZZ		3489-1	13685	CABLE	EA		1
3	10	XDFZZ		CP53B1EB105K1	81349	CAPACITOR, FXD, PAPER	EA		1
3	11	PAFZZ	5905-00-107-8984	0362B	44655	RESISTOR, ADJUSTABLE	EA		1
3	12	PAFZZ	5305-00-984-6203	MS35206-255	96906	SCREW, MACHINE	EA		1
3	13	PAFZZ	5310-00-515-8058	AN960-8	88044	WASHER, FLAT	EA		3
3	14	XDFZZ	5940-00-983-6122	39	81349	TERMINAL BOARD	EA		1
3	15	XDFZZ		AN515-8-11	88044	SCREW, MACHINE	EA		4
3	16	XDFZZ	6145-00-148-5313	5091	70903	CABLE	EA		1
3	17	PAFZZ	5975-00-152-1144	3302	59730	CLAMP, CABLE	EA		1
3	18	XDFZZ		365-11-02-010	71785	MARKER STRIP	EA		1
3	19	XDFFF		2839	13685	CAPACITOR ASSY, LV	EA		1
3	20	PAFZZ	5910-00-158-4779	MILC23269-2	81349	CAPACITOR, FXD, CER	EA		1
3	21	XDFZZ		3027	77147	TERMINAL, LUG	EA		2
3	22	XDFZZ		2722	13685	FILTER BOX	EA		1
3	23	XDFFF		2829	13685	CAPACITOR ASSY, DC	EA		1
3	24	PAFZZ	5910-00-810-0690	CP54B1EB405K1	81349	CAPACITOR, FXD, PAPER	EA		1
3	25	XDFZZ		3027	77147	TERMINAL, LUG	EA		1
3	26	XDFZZ		3489-2	13685	CABLE	EA		1
3	27	XDFZZ		3020	77147	TERMINAL, LUG	EA		1
3	28	PAFZZ	5950-01-023-4922	2831	13685	CHOKE ASSEMBLY	EA		1
3	29	XDFZZ		2836	13685	TERMINAL BOARD ASSY	EA		1
3	30	PAFZZ	5310-00-176-8133	AN340-6	88044	NUT, PLAIN, HEXAGON	EA		2
3	31	PAFZZ	5305-00-889-3001	MS35206-231	96906	SCREW, MACHINE	EA		2
3	32	PAFZZ	5310-00-167-0816	AN960-6	88044	WASHER, FLAT	EA		4
3	33	PAFZZ	5310-00-579-0079	MS35333-37	96906	WASHER, LOCK	EA		2
3	34	PAFZZ	5305-00-889-3002	MS35206-242	96906	SCREW, MACHINE	EA		2
3	35	XDFZZ		2837	13685	TERMINAL BOARD	EA		1
3	36	PAFZZ	5950-01-023-4923	1284	13685	COIL, RADIO FREQUENCY	EA		1
3	37	XDFZZ		3027	77147	TERMINAL, LUG	EA		2
3	38	PAFZZ	6150-01-029-5024	3487-1	13685	LEAD AND TERM ASSY	EA		1
3	39	XDFFF		2828	13685	CAPACITOR ASSEMBLY	EA		1
3	40	PAFZZ	5910-00-129-6260	CP53B1EF105K1	81349	CAPACITOR, FXD, PAPER	EA		1

SECTION II									
(1)	(2)	(3)	(4)	(5)	TM11-6125-252-24P	(7)	(8)		
ILLUSTRATION									
(a)	(b)	NATIONAL		DESCRIPTION					
FIG	ITEM	SMR	STOCK	PART		USABLE ON CODE	U\M	QTY	INC
NO.	NO.	CODE	NUMBER	NUMBER	FSCM			IN	UNIT
3	41	XDFZZ		3489-1	13685	CABLE	EA	1	
3	42	XDFZZ		3027	77147	TERMINAL,LUG	EA	2	
3	43	XDFFF		2827	13685	CAPACITOR ASSY,AC	EA	1	
3	44	XDFZZ		3489-1	13685	CABLE	EA	1	
3	45	XDFZZ		3027	77147	TERMINAL,LUG	EA	1	
3	46	PAFZZ	5910-00-126-9170	CP54B1EF504K1	81349	CAPACITOR,FXD,PAPER	EA	1	
3	47	PAFZZ	5310-00-934-9757	MS35649-282	96906	NUT,PLAIN,HEXAGON	EA	16	
3	48	XDFZZ		3027	77147	TERMINAL,LUG	EA	2	
3	49	PAFZZ	6150-01-029-5027	3487-2	13685	LEAD AND TERM ASSY	EA	1	
3	50	PAFZZ	5325-00-276-6089	2295	70485	GROMMET,RUBBER	EA	2	

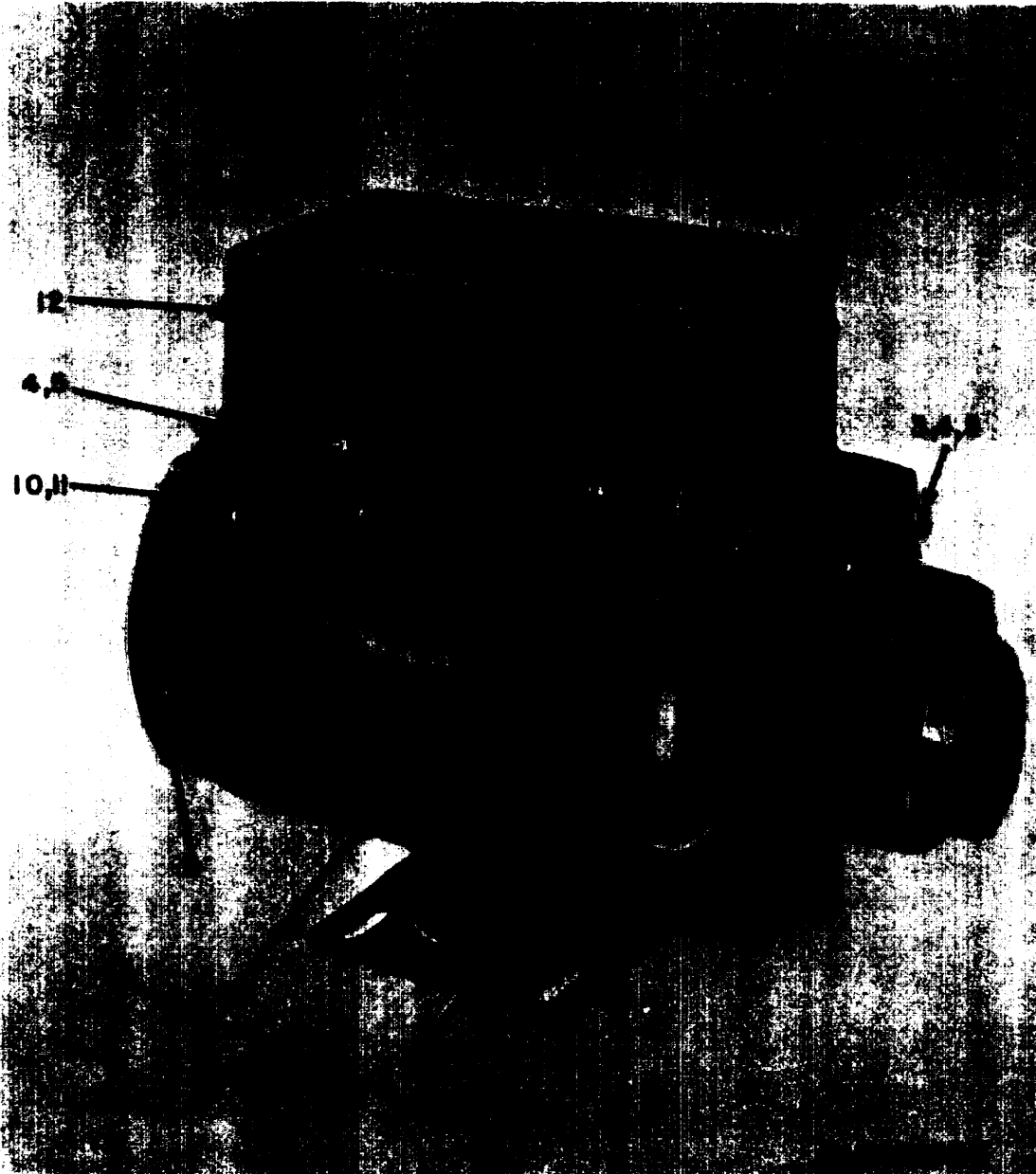
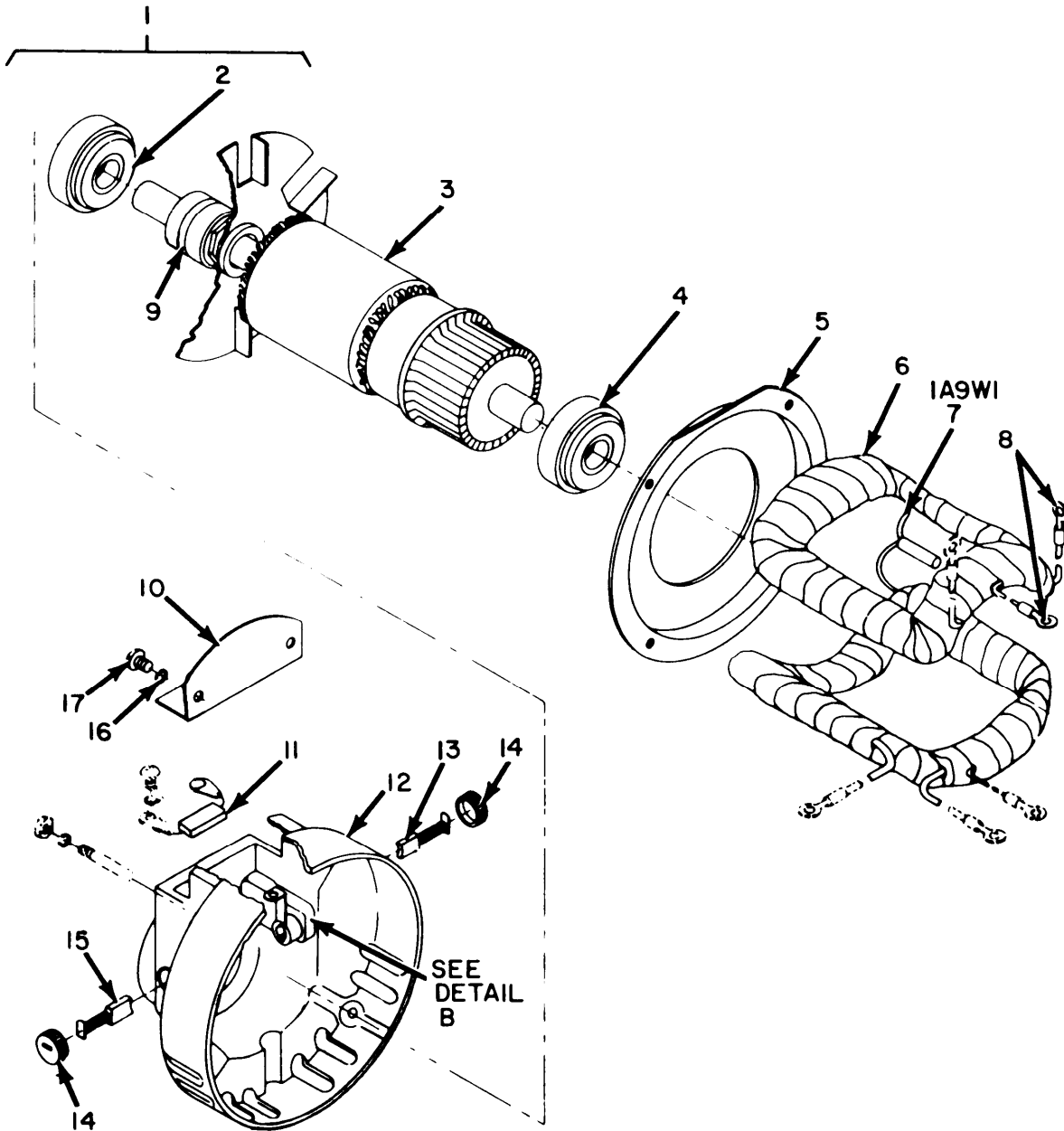


Figure 4. Motor Generator PU-724/G (Dyna Technology).

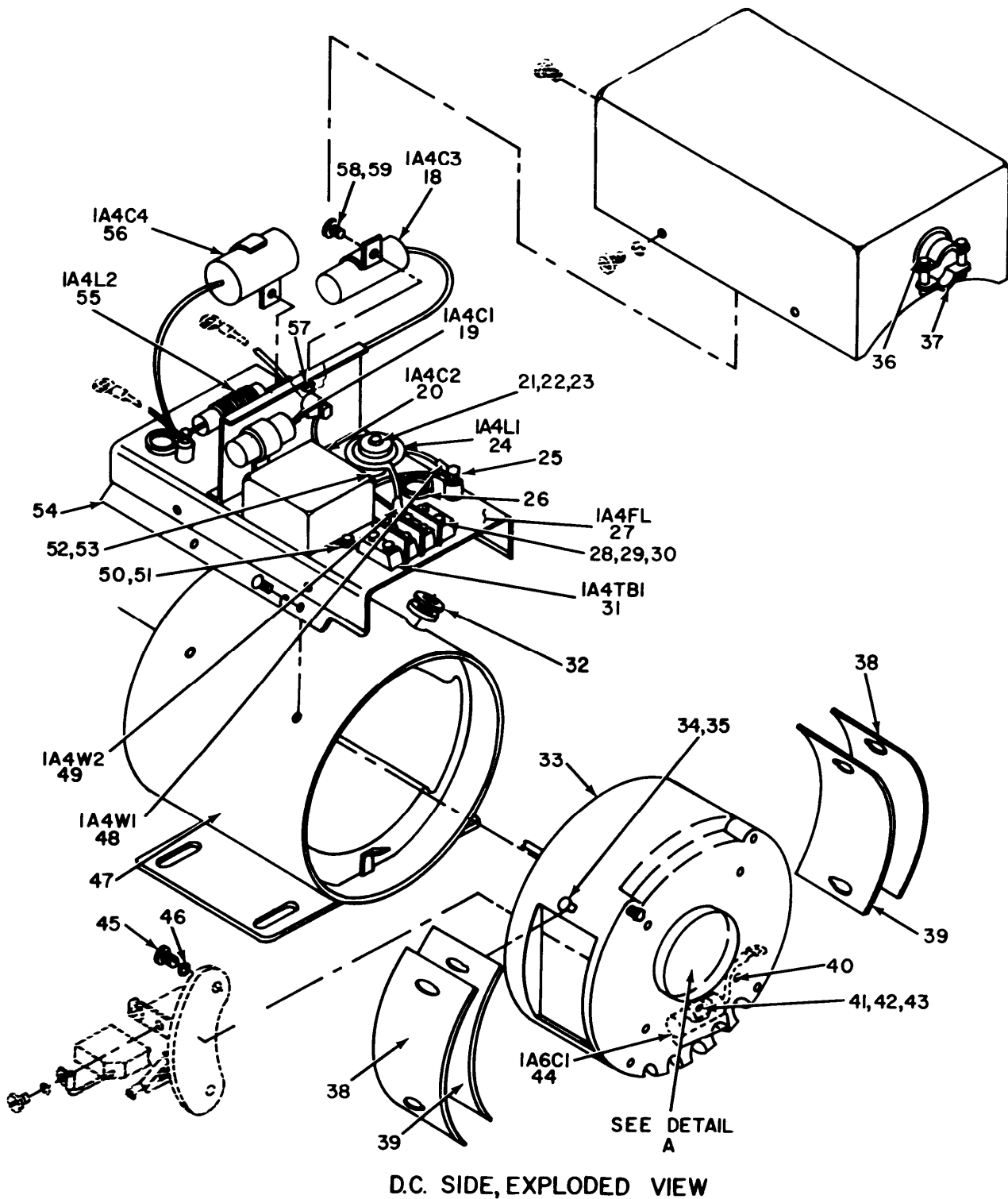
SECTION II.				TM11-6125-252-24P					
(1)	(2)	(3)	(4)	(5)	(6)	(7)	(8)		
ILLUSTRATION									
(a)	(b)	NATIONAL		DESCRIPTION					
FIG	ITEM	SMR	STOCK	PART	FSCM	USABLE ON CODE	U\M	QTY	INC
NO.	NO.	CODE	NUMBER	NUMBER				IN	UNIT
GROUP OO MOTOR GENERATOR PU-724/G									
(DYNA TECHNOLOGY)									
4	1	AFFFF		B27999	30887		EA	1	
4	2	PAFZZ	5935-00-283-4003	WC00596	81348		EA	1	
4	3	XDFZZ		MS35649-82	96906		EA	2	
4	4	XDFZZ		MS35359-43	96906		EA	8	
4	5	XDFZZ	5310-00-045-3299	MS35338-42	96906		EA	8	
4	6	AFFFF		C27386	30887		EA	1	
4	7	XDFFF		B27352	30887		EA	1	
4	8	XDFFF		C27387	30887		EA	1	
4	9	XDFFF		C27353	88813		EA	1	
4	10	XDFZZ		MS35359-43	96906		EA	7	
4	11	XDFZZ		MS35335-17	96906		EA	4	
4	12	XDFZZ		B28000	30887		EA	1	



A.C. SIDE, EXPLODED VIEW

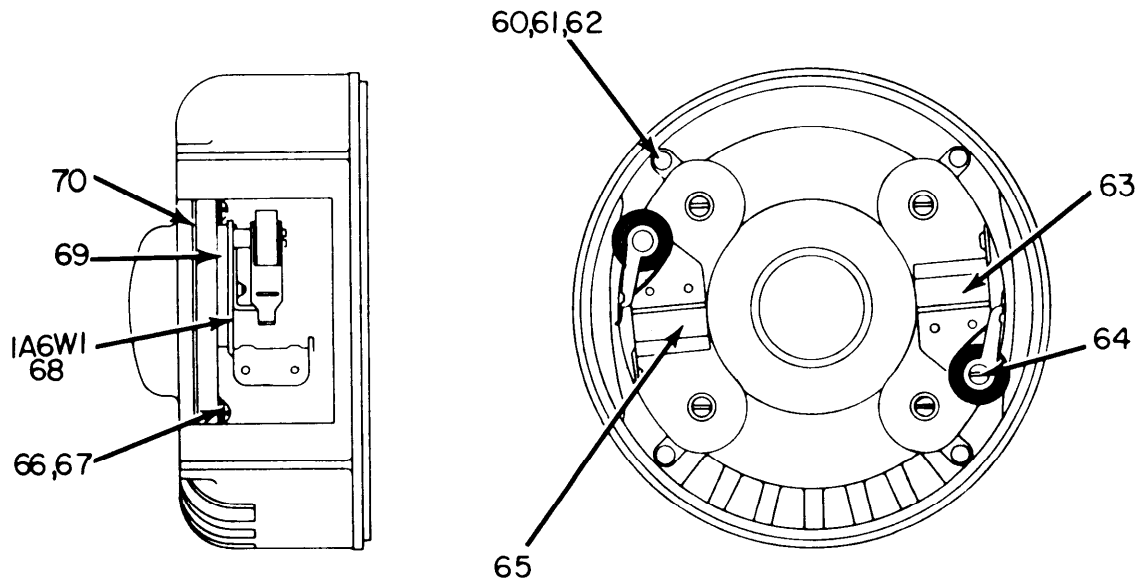
EL3XM006

Figure 5. Motor Generator PU-724/G (Dyna Technology) (Sheet 1 or 3).

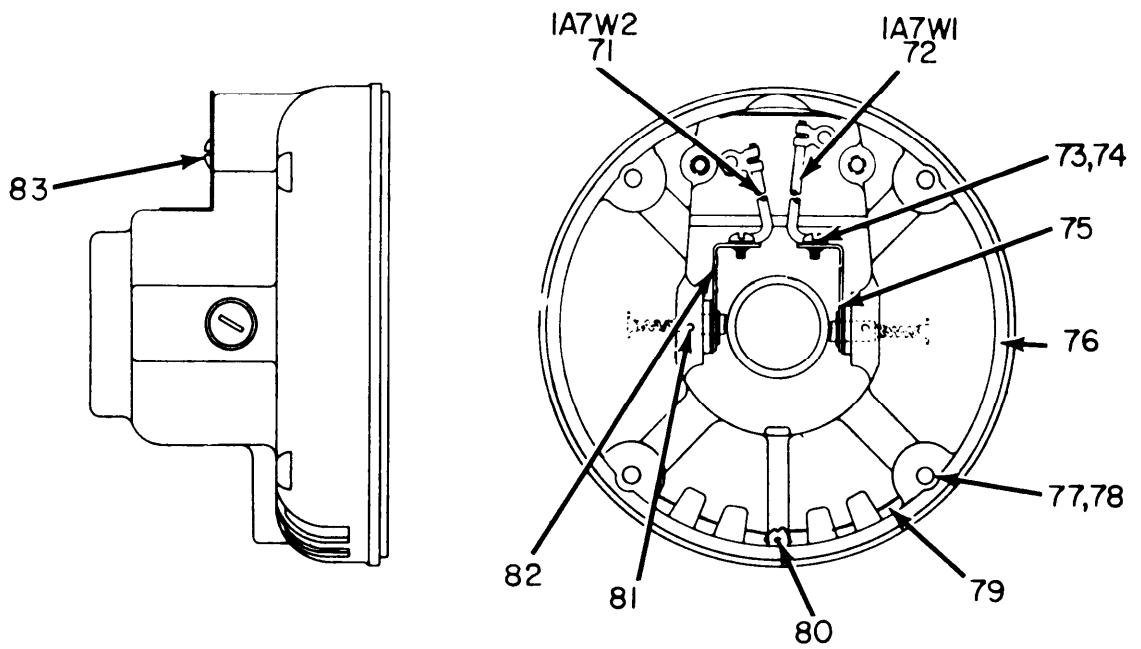


EL3XM007

Figure 5. Motor Generator PU-724/G (Dyna Technology) (Sheet 2 of 3).



DETAIL A
D.C. ENDBELL, MOTOR GENERATOR



DETAIL B
A.C. ENDBELL, MOTOR GENERATOR

EL3XM008

Figure 5. Motor Generator PU-724/G (Dyna Technology)(Sheet 3 of 3).

SECTION II				TM11-6125-252-24P					
(1)	(2)	(3)	(4)	(5)	(6)	(7)	(8)		
ILLUSTRATION					DESCRIPTION		QTY		
(a)	(b)	NATIONAL	PART	FSCM		U\M	INC		
FIG NO.	ITEM NO.	STOCK NUMBER	NUMBER				IN		
NO.	NO.	NUMBER					UNIT		
5	1	XDFFF	C26962	30887	ARMATURE ASSEMBLY	EA	1		
5	2	PAFZZ 3110-00-156-3471	88502	43334	BEARING,BALL,ANN	EA	1		
5	3	PAFZZ 6125-00-408-2615	C26962-1	30887	ARMATURE,MOTOR-G	EA	1		
5	4	PAFZZ 3110-00-156-3502	88503	43334	BEARING,BALL ANLR	EA	1		
5	5	XDFZZ	B27363	30887	BAFFLE FAN	EA	1		
5	6	PAFZZ 6125-00-235-4494	B28001	66099	WINDING,FIELD	EA	1		
5	7	XDFZZ	A27400	30887	LEAD,ELECTRICAL	EA	1		
5	8	XDFZZ	A27379	30887	HOLDER,FIELD	EA	2		
5	9	XDFZZ	A27378	30887	INSULATION SH,ELEC	EA	4		
5	10	XDFZZ	A27377	30887	COVER,PLATE ACCESSS	EA	1		
5	11	XDFZZ	A27395	30887	CAPACITOR,FXD,MICA	EA	1		
5	12	XDFZZ	B27669	30887	END BELL,OUTPUT	EA	1		
5	13	PAOZZ 5977-00-617-1259	A27997	30887	BRUSH SET,ELEC CONT	EA	1		
5	14	PAOZZ 5999-00-249-8692	A25099	66099	CAP,ELECTRICAL	EA	2		
5	15	PAOZZ 5977-00-617-1954	A27996	30887	BRUSH SET,ELEC CONT	EA	1		
5	16	PAFZZ 5310-00-582-5965	MS35338-44	96906	WASHER,LOCK	EA	2		
5	17	XDFZZ	MS35357-77	96906	SCREW,MACHINE,RDH	EA	2		
5	18	XDFZZ	A27442	30887	CAPACITOR,FXD,PAPER	EA	1		
5	19	PAFZZ 5910-00-577-9293	A27437	30887	CAPACITOR,FXD,PAPER	EA	1		
5	20	PAFZZ 5910-00-171-2952	CP53B1EB405K1	81349	CAPACITOR,FXD,PAPER	EA	1		
5	21	XDFZZ	A27443	30887	SCREW,MACHINE	EA	5		
5	22	XDFZZ	A27724	30887	WASHER,FLAT	EA	9		
5	23	XDFZZ	A5746	30887	WASHER,LOCK	EA	9		
5	24	PAFZZ 5950-00-656-2349	A72425	30887	COIL,RF	EA	1		
5	25	XDFZZ	A5483	30887	NUT,PLAIN,HEXAGON	EA	8		
5	26	PAFZZ 5325-00-290-4344	1787	70485	GROMMET,RUBBER	EA	2		
5	27	XDFFF	C27439	88813	FILTER ASSEMBLY	EA	1		
5	28	XDFZZ	MS35359-46	96906	SCREW,MACHINE	EA	4		
5	29	XDFZZ	A6631	30887	WASHER,FLAT	EA	4		
5	30	XDFZZ 5310-00-045-3299	MS35338-23	96906	WASHER,LOCK	EA	4		
5	31	PAFZZ 5940-00-983-6043	602M2F	75382	TERMINAL BOARD	EA	1		
5	32	XDFZZ	2533	70485	GROMMET,RUBBER	EA	2		
5	33	XDFZZ	C27380	88813	END BELL-INPUT	EA	1		
5	34	XDFZZ	MS35359-43	96906	SCREW,MACHINE	EA	8		
5	35	XDFZZ	MS35335-17	96906	WASHER,LOCK	EA	4		
5	36	XDFZZ	A27416	30887	WASHER,FLAT	EA	1		
5	37	PAFZZ 5975-00-152-1144	3302	59730	BOX COMMERCIAL,EL	EA	1		
5	38	XDFZZ	A27375	30887	COVER,ELEC CONT B A	EA	2		
5	39	XDFZZ	A27376	30887	INSULATION SH ELEC	EA	2		
5	40	XDFZZ 5310-00-934-9751	MS35650-102	96906	NUT,PLAIN,HEXAGON	EA	4		

SECTION II				TM11-6125-252-24P					
(1)	(2)	(3)	(4)	(5)	(6)	(7)	(8)		
ILLUSTRATION		NATIONAL			DESCRIPTION		QTY		
(a) (b)		STOCK	PART				INC		
FIG NO.	ITEM NO.	NUMBER	NUMBER	FSCM		USABLE ON CODE	IN		
	SMR					U\M	UNIT		
5	41	XDFZZ	5310-00-934-9751	MS35650-102	96906	NUT, PLAIN, HEXAGON	EA	1	
5	42	XDFZZ		MS35359-64	96906	SCREW, MACHINE	EA	1	
5	43	XDFZZ		MS35335-16	96906	WASHER, LOCK	EA	1	
5	44	XDFZZ		A40877	30887	CAPACITOR, FXD, PAPER	EA	1	
5	45	XDFZZ		A26965	30887	SCREW, MACHINE	EA	4	
5	46	PAFZZ	5310-00-045-3296	MS35338-43	96906	WASHER, LOCK	EA	4	
5	47	XDFZZ		E26963	30887	HOUSING	EA	1	
5	48	XDFZZ		A27424	30887	LEAD, ELECTRICAL	EA	1	
5	49	XDFZZ		A27428	30887	LEAD, ELECTRICAL	EA	1	
5	50	XDFZZ		MS35357-41	96906	SCREW, MACHINE	EA	2	
5	51	XDFZZ	5310-00-045-3299	MS35338-23	96906	WASHER, LOCK	EA	2	
5	52	XDFZZ		A27441	30887	INSULATOR, WASHER	EA	4	
5	53	PAFZZ	5970-00-496-8548	A27346	30887	INSULATOR, STANDOFF	EA	5	
5	54	XDFZZ		B27420	30887	BRACKET, MTG FILTER	EA	1	
5	55	PAFZZ	5950-00-656-2350	A27412	66099	COIL, RF	EA	1	
5	56	XDFZZ		A27438	30887	CAPACITOR, FXD, PAPER	EA	1	
5	57	PAFZZ	5310-00-013-4530	MS35649-62	96906	NUT, PLAIN, HEXAGON	EA	3	
5	58	XDFZZ		MS35357	96906	SCREW, MACHINE	EA	3	
5	59	XDFZZ		MS35358	96906	WASHER, LOCK	EA	3	
5	60	XDFZZ		A27390	30887	SCREW, MACHINE	EA	4	
5	61	XDFZZ		A25551	30887	WASHER, FLAT	EA	4	
5	62	PAFZZ	5310-00-045-3296	MS35338-43	96906	WASHER, LOCK	EA	4	
5	63	PAFZZ	5977-00-409-0909	A27381	30887	HOLDER, ELECTRICAL	EA	1	
5	64	XDFZZ		A27389	30887	SCREW, MACHINE	EA	2	
5	65	PAFZZ	5977-00-409-0908	A27357	30887	HOLDER, ELECTRICAL	EA	1	
5	66	XDFZZ		MS35359-26	96906	SCREW, MACHINE	EA	2	
5	67	XDFZZ	5310-00-209-0788	MS35335-30	96906	WASHER, LOCK	EA	2	
5	68	XDFZZ		A40941-1	30887	STRIP, CONN, ELEC	EA	1	
5	69	XDFZZ		A8697	30887	PLATE, MOUNTING	EA	1	
5	70	XDFZZ		B27368	30887	SCREEN, PROTECTIVE	EA	1	
5	71	XDFZZ		A27398	30887	LEAD, ELECTRICAL	EA	1	
5	72	XDFZZ		A27396	30887	LEAD, ELECTRICAL	EA	1	
5	73	XDFZZ		MS35359-43	96906	SCREW, MACHINE	EA	2	
5	74	XDFZZ	5310-00-045-3299	MS35338-42	96906	WASHER, LOCK	EA	2	
5	75	XDFZZ		A27356	30887	HOLDER, ELEC BRUSH	EA	1	
5	76	XDFZZ		A27370	30887	SCREEN, PROTECTIVE	EA	2	
5	77	XDFZZ		MS35359-26	96906	SCREW, MACHINE	EA	4	
5	78	XDFZZ	5310-00-209-0788	MS35335-30	96906	WASHER, LOCK	EA	8	
5	79	XDFZZ		B27369	30887	SCREEN, PROTECTIVE	EA	1	
5	80	XDFZZ		MS35359-25	96906	SCREW, MACHINE	EA	4	

SECTION II									
(1)	(2)	(3)	(4)	(5)	TM11-6125-252-24P (6)	(7)	(8)		
ILLUSTRATION									
(a)	(b)	NATIONAL		DESCRIPTION				QTY	
FIG	ITEM	SMR	STOCK	PART				INC	
NO.	NO.	CODE	NUMBER	NUMBER	FSCM	USABLE ON CODE	U\M	IN	UNIT
5	81	XDFZZ		MS51017-34	96906	SETScrew		EA	2
5	82	XDFZZ		A27373	30887	HOLDER, ELEC BRUSH		EA	1
5	83	XDFZZ	5310-00-045-3299	MS35338-23	96906	WASHER, LOCK		EA	4

SECTION IV

NATIONAL STOCK NUMBER AND PART NUMBER INDEX

NOTE: LATEST NATIONAL STOCK NUMBER AND PART NUMBER ASSIGNMENTS ARE INCLUDED AT END OF INDEX

STOCK NUMBER	FIGURE NO.	ITEM NO.	STOCK NUMBER	FIGURE NO.	ITEM NO.
5310-00-013-4530	5	7	5310-00-515-8058	3	13
5310-00-045-3296	5	46	5310-00-559-0070	1	5
5310-00-045-3296	5	62	5310-00-576-5752	3	3
			5910-00-577-9293	5	19
			5310-00-579-0079	1	11
5310-00-045-3299	4	13	5310-00-579-0079	3	33
5310-00-045-3299	5	30	5310-00-582-5965	5	16
5310-00-045-3299	5	51	5977-00-617-1259	5	1
			5977-00-617-1954	5	15
5310-00-045-3299	5	83	5940-00-629-6762	2	28
5905-00-107-8984	3	11	5977-00-629-7622	2	17
5910-00-126-9170	3	46	5977-00-629-7659	1	9
5910-00-129-6260	3	40	5950-00-656-2349	5	24
6145-00-148-5313	3	16	5305-00-719-5342	2	48
5975-00-152-1144	3	17	5910-00-810-0690	3	24
5975-00-152-1144	5	37	5305-00-889-3000	2	36
3110-00-156-3471	5	2	5305-00-889-3000	2	64
3110-00-156-3502	5	4	5305-00-889-3002	3	34
5310-00-167-0721	2	11	5310-00-934-9751	5	40
5310-00-167-0816	3	32	5310-00-934-9751	5	41
5910-00-171-2952	5	20	5940-00-983-6043	5	31
5305-00-175-3230	2	13	5940-00-983-6122	3	14
5310-00-176-8133	1	12	5305-00-984-4988	1	10
5310-00-176-8133	2	39	5305-00-984-6203	3	12
5310-00-176-8133	2	58	5305-00-990-6444	3	2
5310-00-176-8133	3	30	5325-01-004-0295	2	4
5940-00-187-5075	2	7	5306-01-004-0296	2	15
5940-00-187-5075	3	4	5320-01-004-0307	2	24
5310-00-209-0786	2	3	5365-01-004-0612	2	29
5310-00-209-0786	2	14	5365-01-004-0612	2	56
5310-00-209-0786	2	33	5925-01-004-3055	2	42
5310-00-209-0788	2	40	5999-01-004-9905	2	46
5310-00-209-0788	2	59	5999-01-004-9905	2	50
5310-00-209-0788	5	67	5999-01-004-9905	2	57
5310-00-209-0788	5	78	5305-01-009-6673	2	16
5325-00-276-6089	3	50	5305-01-009-7149	2	35
5325-00-290-4344	2	55	5950-01-023-4922	3	28
5325-00-290-4344	5	26	5950-01-023-4923	3	36
6125-00-408-2615	5	3	5999-01-023-8498	1	8
5977-00-409-0908	5	65	6150-01-029-5024	3	38
5977-00-409-0909	5	63	6150-01-029-5027	3	49
5935-00-448-1085	1	13	6150-01-029-5029	3	1
5970-00-496-8548	5	53			

PART NUMBER	FSCM	FIG. NO.	ITEM NO.	PART NUMBER	FSCM	FIG. NO.	ITEM NO.
AN340-6	88044	1	12	A27375	30887	5	38
AN340-6	88044	2	39	A27376	30887	5	39
AN340-6	88044	2	58	A27377	30887	5	10
AN340-6	88044	3	30	A27378	30887	5	9
				A27379	30887	5	8
AN40X12S	51588	2	29	A27381	30887	5	63
AN40X12S	51588	2	56	A27389	30887	5	64
AN500-416-26	88044	2	67	A27390	30887	5	60
AN500-416-44	88044	2	34	A27395	30887	5	11
				A27396	30887	5	72
AN515-8-11	88044	3	15	A27398	30887	5	71
AN515-8-6	88044	1	4	A27400	30887	5	7
AN515-8-8	88044	3	6	A27412	66099	5	55
AN535-2-3	88044	2	13	A27416	30887	5	36
AN560A10-10	88044	2	19				
AN560A10-10	88044	2	21	A27424	30887	5	48
AN936A516	88044	2	11				
AN936B416	88044	2	3	A27428	30887	5	49
AN936B416	88044	2	14	A27437	30887	5	19
AN936B416	88044	2	33	A27438	30887	5	56
AN936B6	88044	2	40	A27441	30887	5	52
AN936B6	88044	2	59	A27442	30887	5	18
AN960-6	88044	3	32	A27443	30887	5	21
AN960-8	88044	3	13	A27724	30887	5	22
A25099	66099	5	14	A27996	30887	5	15
A25551	30887	5	61	A27997	30887	5	13
A26965	30887	5	45	A40877	30887	5	44
A27346	30887	5	53	A40941-1	30887	5	68
A27356	30887	5	75	A5483	30887	5	25
A27357	30887	5	65	A5746	30887	5	23
A27370	30887	5	76	A6631	30887	5	29
A27373	30887	5	82	A72425	30887	5	24

SECTION IV

NATIONAL STOCK NUMBER AND PART NUMBER INDEX

PART NUMBER	FSCM	FIG. NO.	ITEM NO.	PART NUMBER	FSCM	FIG. NO.	ITEM NO.
A8697	30887	5	69	1253	13685	2	38
BE52	26992	1	8	1261	13685	2	27
B27352	30887	4	7	1282	13685	2	18
B27363	30887	5	5	1284	13685	3	36
B27368	30887	5	70	1291	13685	2	51
B27369	30887	5	79	1705-516-12	13685	2	10
B27420	30887	5	54	1787	70485	2	55
B27669	30887	5	12	1787	70485	5	26
B27999	30887	4	1	1905	13685	2	61
B28000	30887	4	14	1961-3	13685	2	4
B28001	66099	5	6	2045	77147	2	7
CP12A3KF104K1	81349	2	49	2045	77147	3	4
CP12A3KF104K1	81349	2	26	2055	77147	2	28
CP53B1EB105K1	81349	3	10	2087-420-8	13685	2	2
CP53B1EF105K1	81349	3	40	2087-428-14	13685	2	15
CP54B1EB405K1	81349	3	24	2095-1024-6RE	13685	2	16
CP54B1EF504K1	81349	3	46	2095-1032-12RE	13685	2	35
C26962	30887	5	1	2095-6-4RE	13685	2	30
C26962-1	30887	5	3	2095-8-4RE	13685	1	3
C27353	88813	4	9	2095-8-4RE	13685	2	62
C27380	88813	5	33	2097-7	13685	2	24
C27386	30887	4	6	2295	70485	3	50
C27387	30887	4	8	2533	70485	5	32
C27439	88813	5	27	26-C	26992	2	57
E26963	30887	5	47	26-C	46992	2	46
MILC23269-2	81349	3	20	26-C	46992	2	50
MS35206-2288	96906	1	10	2701	13685	1	7
MS35206-230	96906	2	36	2702	13685	2	32
MS35206-230	96906	2	64	2703	13685	2	44
MS35206-242	96906	3	34	2704	13685	2	42
MS35206-255	96906	3	12	270654-55	13685	2	8
MS35207-261	96906	3	2	2707	13685	2	9
MS35333-37	96906	1	11	2710	13685	2	54
MS35333-37	96906	3	33	2711	13685	2	25
MS35333-38	96906	1	5	2712	13685	2	43
MS35333-39	96906	3	3	2713	13685	2	1
MS35335-16	96906	5	43	2714	13685	2	5
MS35335-17	96906	4	11	2715	13685	2	6
MS35335-17	96906	5	35	2717	13685	1	9
MS35335-30	96906	5	67	2719	13685	2	31
MS35335-30	96906	5	78	2720	13685	2	66
				2722	13685	3	22
				2827	13685	3	43
MS35338-23	96906	5	30	2828	13685	3	39
MS35338-23	96906	5	51	2829	13685	3	23
				2830	13685	3	7
MS35338-23	96906	5	83	2831	13685	3	28
MS35338-43	96906	5	46	2835	13685	1	6
MS35338-43	96906	5	62	2836	13685	3	29
MS35338-44	96906	5	16	2837	13685	3	35
MS35357	96906	5	58	2838	13685	1	1
MS35357-41	96906	5	50	2839	13685	3	19
MS35357-77	96906	5	17	3020	77147	2	65
MS35358	96906	5	59	3020	77147	3	27
MS35359-25	96906	5	80	3027	77147	2	60
MS35359-26	96906	5	66	3027	77147	3	8
MS35359-26	96906	5	77	3027	77147	3	21
MS35359-43	96906	4	4	3027	77147	3	25
MS35359-43	96906	4	10	3027	77147	3	42
				3027	77147	3	45
MS35359-43	96906	5	34	3027	77147	3	48
MS35359-43	96906	5	73	3027	77147	3	37
MS35359-46	96906	5	28	3302	59730	3	17
MS35359-64	96906	5	42	3302	59730	5	37
MS35649-62	96906	5	57	3485	13685	2	47
MS35649-82	96906	4	3	3486	13685	2	63
MS35650-102	96906	5	40	3487-1	13685	3	38
MS35650-102	96906	5	41	3487-2	13685	3	49
MS51017-34	96906	5	81	3488-1	13685	3	1
MS51963-34	96906	2	48	3489-1	13685	3	9
S17	43334	2	53	3489-1	13685	3	41
X1000-81	13685	2	52	3489-1	13685	3	44
X1000-97	13685	3	5	3489-2	13685	3	26
Z97503	43334	2	41	365-11-02-010	71785	3	18
0362B	44655	3	11	3761	13685	2	12
1212	13685	2	37	39	81349	3	14
1218	13685	2	17	5091	70903	3	16
1225	13685	2	20	5252	74545	1	13
1246	13685	2	23	52825	81368	1	2
1247	13685	2	22	602M2F	75382	5	31

SECTION IV

NATIONAL STOCK NUMBER AND PART NUMBER INDEX

PART NUMBER	FSCM	FIG. NO.	ITEM NO.	PART NUMBER	FSCM	FIG. NO.	ITEM NO.
8010CG1250	46992	2	45	88503	43334	5	4
88502	43334	5	2				

LATEST NATIONAL STOCK NUMBER ASSIGNMENTS

STOCK NUMBER	FIG. NO.	ITEM NO.	STOCK NUMBER	FIG. NO.	ITEM NO.
3110-00-114-6005	2	41	5950-00-656-2350	5	55
5310-00-141-9705	2	53	5305-00-889-3001	3	31
5910-00-158-4779	3	20	5310-00-934-9757	3	47
6125-00-235-4494	5	6	5305-00-984-6193	3	6
5999-00-249-8692	5	14	5360-01-010-2676	2	22

LATEST PART NUMBER ASSIGNMENTS

PART NUMBER	FSCM	FIG. NO.	ITEM NO.	PART NUMBER	FSCM	FIG. NO.	ITEM NO.
CP53BIEB405K1	81349	5	20	MS35649-282	96906	3	47
MS35206-231	96906	3	31				

ADDITIONAL LATEST NATIONAL STOCK NUMBER ASSIGNMENTS

STOCK NUMBER	FIG. NO.	ITEM NO.
5935-00-283-4003	4	2
5310-00-045-3299	4	5
5310-00-045-3299	5	74

ADDITIONAL LATEST PART NUMBER ASSIGNMENTS

PART NUMBER	FSCM	FIG. NO.	ITEM NO.
MS35338-42	96906	4	5
MS35338-42	96906	5	74
WC00596	81348	4	2



SOMETHING WRONG WITH THIS MANUAL?

THEN... JOT DOWN THE DOPE ABOUT IT ON THIS FORM, TEAR IT OUT, FOLD IT AND DROP IT IN THE MAIL!

FROM: (YOUR UNIT'S COMPLETE ADDRESS)

Commander
Stateside Army Depot
ATTN: AMSTA-US
Stateside, N.J. 07703

DATE 10 July 1975

PUBLICATION NUMBER TM 11-5840-340-12	DATE 23 Jan 74	TITLE Radar Set AN/PSC-76
---	-------------------	------------------------------

BE EXACT... PIN-POINT WHERE IT IS				IN THIS SPACE TELL WHAT IS WRONG AND WHAT SHOULD BE DONE ABOUT IT:
PAGE NO.	PARA-GRAPH	FIGURE NO.	TABLE NO.	
2-25	2-28			<p>Recommend that the installation antenna alignment procedure be changed throughout to specify a 2° IFF antenna lag rather than 1°.</p> <p>REASON: Experience has shown that with only a 1° lag, the antenna servo system is too sensitive to wind gusting in excess of 27 knots, and has a tendency to rapidly accelerate and decelerate as it hunts, causing strain to the drive train. Hunting is minimized by adjusting the lag to 2° without degradation of operation.</p>
3-10	3-3		3-1	<p>Item 5, Functions column. Change "2 db" to "3db."</p> <p>REASON: The adjustment procedure for the TRANS POWER FAULT indicator calls for a 3 db (500 watts) adjustment to light the TRANS POWER FAULT indicator.</p>
5-6	5-8			<p>Add new step f.1 to read, "Replace cover plate removed in step e.1, above."</p> <p>REASON: To replace the cover plate.</p>
		FO3		<p>Zone C 3. On J1-2, change "+24 VDC to "+5 VDC."</p> <p>REASON: This is the output line of the 5 VDC power supply. + 24 VDC is the input voltage.</p>

TEAR ALONG DOTTED LINE

TYPED NAME, GRADE OR TITLE, AND TELEPHONE NUMBER SSG I. M. DeSpirito 999-1776	SIGN HERE: <i>SSG I. M. DeSpirito</i>
--	--

DA FORM 2028-2 (TEST) 1 AUG 74

P.S.--IF YOUR OUTFIT WANTS TO KNOW ABOUT YOUR MANUAL "FIND," MAKE A CARBON COPY OF THIS AND GIVE IT TO YOUR HEADQUARTERS.

HISA 1686-75

FILL IN YOUR
UNIT'S ADDRESS



FOLD BACK

DEPARTMENT OF THE ARMY

OFFICIAL BUSINESS

Commander
US Army Communications and Electronics
Materiel Readiness Command
ATTN: DRSEL-MA-Q
Fort Monmouth, New Jersey 07703

FOLD BACK

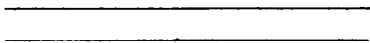
TEAR ALONG DOTTED LINE

FILL IN YOUR
UNIT'S ADDRESS



FOLD BACK

DEPARTMENT OF THE ARMY



OFFICIAL BUSINESS

Commander
US Army Communications and Electronics
Materiel Readiness Command
ATTN: DRSEL-MA-Q
Fort Monmouth, New Jersey 07703

FOLD BACK

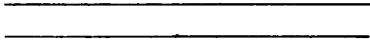
TEAR ALONG DOTTED LINE

FILL IN YOUR
UNIT'S ADDRESS



FOLD BACK

DEPARTMENT OF THE ARMY



OFFICIAL BUSINESS

Commander
US Army Communications and Electronics
Materiel Readiness Command
ATTN: DRSEL-MA-Q
Fort Monmouth, New Jersey 07703

FOLD BACK

TEAR ALONG DOTTED LINE

By Order of the Secretary of the Army:

BERNARD W. ROGERS
General, United States Army
Chief of Staff

Official:

J. C. PENNINGTON
Brigadier General, United States Army
The Adjutant General

Distribution:

To be distributed in accordance with DA Form 12-51, Organizational maintenance requirements for PU-724/G.

